

**Contact Information**

**Owner** p: (614) 621-9000  
Washington Prime Group  
180 East Broad Street  
Columbus, OH 43215

**General Contractor** p: (405) 755-7624  
Smith & Pickett  
12415 North Santa Fe Avenue  
Oklahoma City, Oklahoma 73114

**Architect** p: (513) 241-3000  
FRCH Design Worldwide - Cincinnati, Inc.  
311 Elm Street, Suite 600  
Cincinnati, Ohio 45202  
f: (513) 241-5015

**Civil Engineer** p: (405) 235-8075  
Johnson & Associates, Inc.  
1 East Sheridan Avenue, Suite 200  
Oklahoma City, Oklahoma 73104  
f: (405) 235-8078

**Structural Engineer** p: (405) 236-5858  
Wallace Engineering  
Structural Consultants, Inc.  
120 East Sheridan Avenue, Suite 104  
Oklahoma City, OK 73104

**Reg. Mech./Elec. Engr.** p: (330) 659-6688  
Thornon Baker & Associates, Inc.  
3030 West Streeshoro Road  
Richfield, Ohio 44286  
f: (330) 659-6675

**Sheet Issue Information**

Issued: BID/PERMIT: 12.16.2016

Revised	#	Description	Date

**Professional Stamp**

**Project Information**

**Title** Springhill Suites  
Exterior Updates

**Address** Classen Curve  
Northwest Grand Boulevard  
Oklahoma City, OK 73118

**Project Number** 032841.000

**Sheet Information**

**Title** Color Elevations

**Drawn** MMA, ML

**Reviewed** ML

**Scale** As Noted

**Authorized For** BID & PERMIT

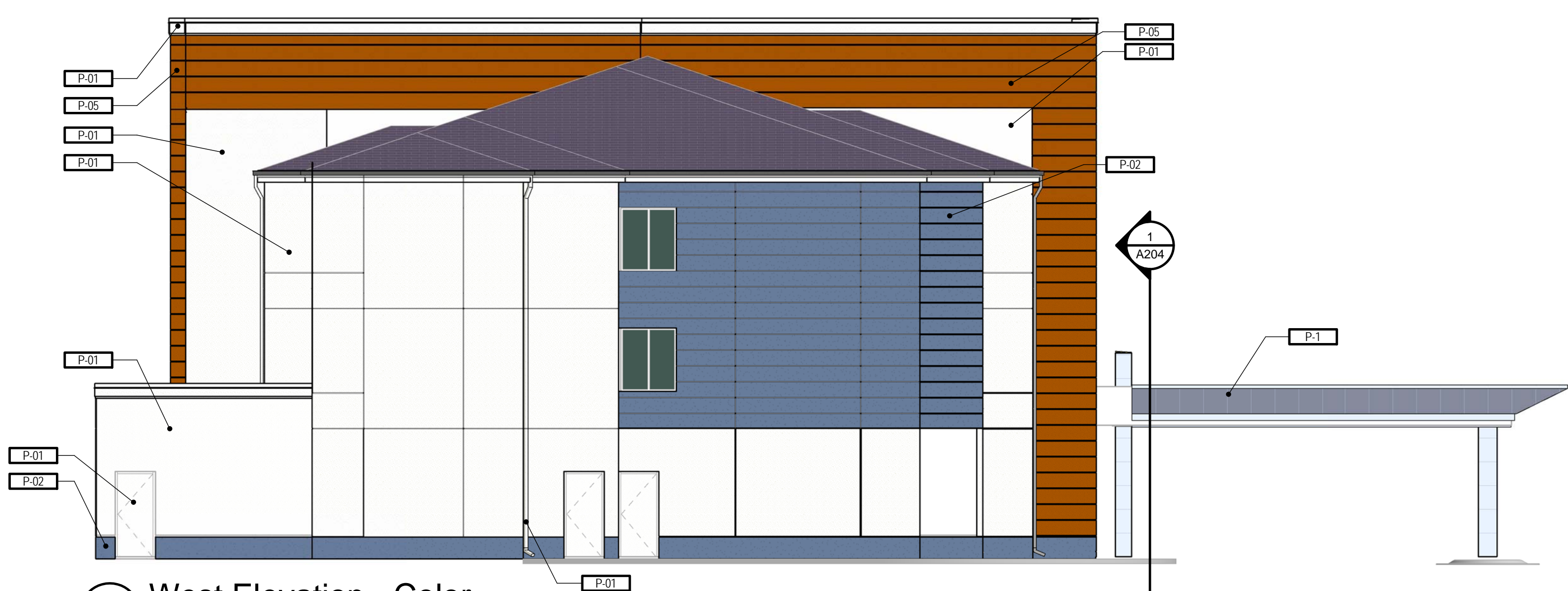
**C1**



**2 Front Elevation - Color**  
C1 1/8" = 1'-0"



**1 Rear Elevation - Color**  
C1 1/8" = 1'-0"



**3 West Elevation - Color**  
C1 1/8" = 1'-0"



**4 East Elevation Color**  
C1 1/8" = 1'-0"

**COLOR LEGEND**

- P-1 Incredible White; Sherwin Williams "SW 7028 Incredible White"
- P-2 Indigo Batik; Sherwin Williams "SW 7402 Indigo Batik"
- P-5 Java; Sherwin Williams "SW 6090 Java"

**MATERIALS LEGEND**

- M Metal Panel Cladding; Alucobond or equivalent
- DPS StoPowertwall Cement Stucco System, or equivalent
- MC Metal Coping with integral drip edge
- WF Aluminum Window Frame; Existing; see detail 4/A201
- F Fascia Board

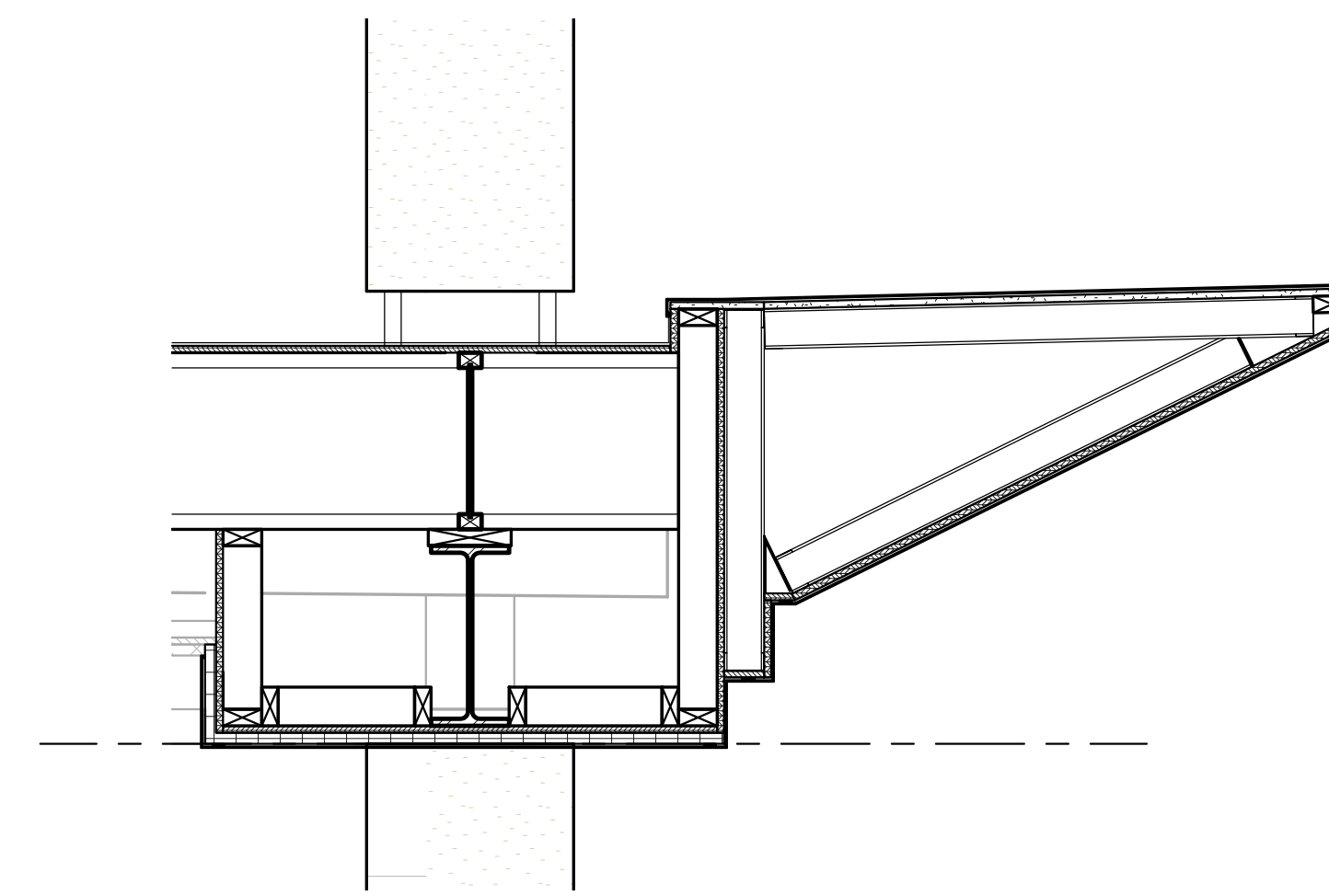
NOTE: REPRESENTATION OF COLOR ON SCREEN OR PAPER MAY NOT ACCURATELY REPRODUCE THE SPECIFIED HUE. COLORS ARE SELECTED FROM THE STANDARD COLOR PALLETTE OF THE MARRIOTT GEN. 4.5 PROTOTYPE.

SEE SHEETS A201, A202 FOR MATERIAL CALLOUTS.

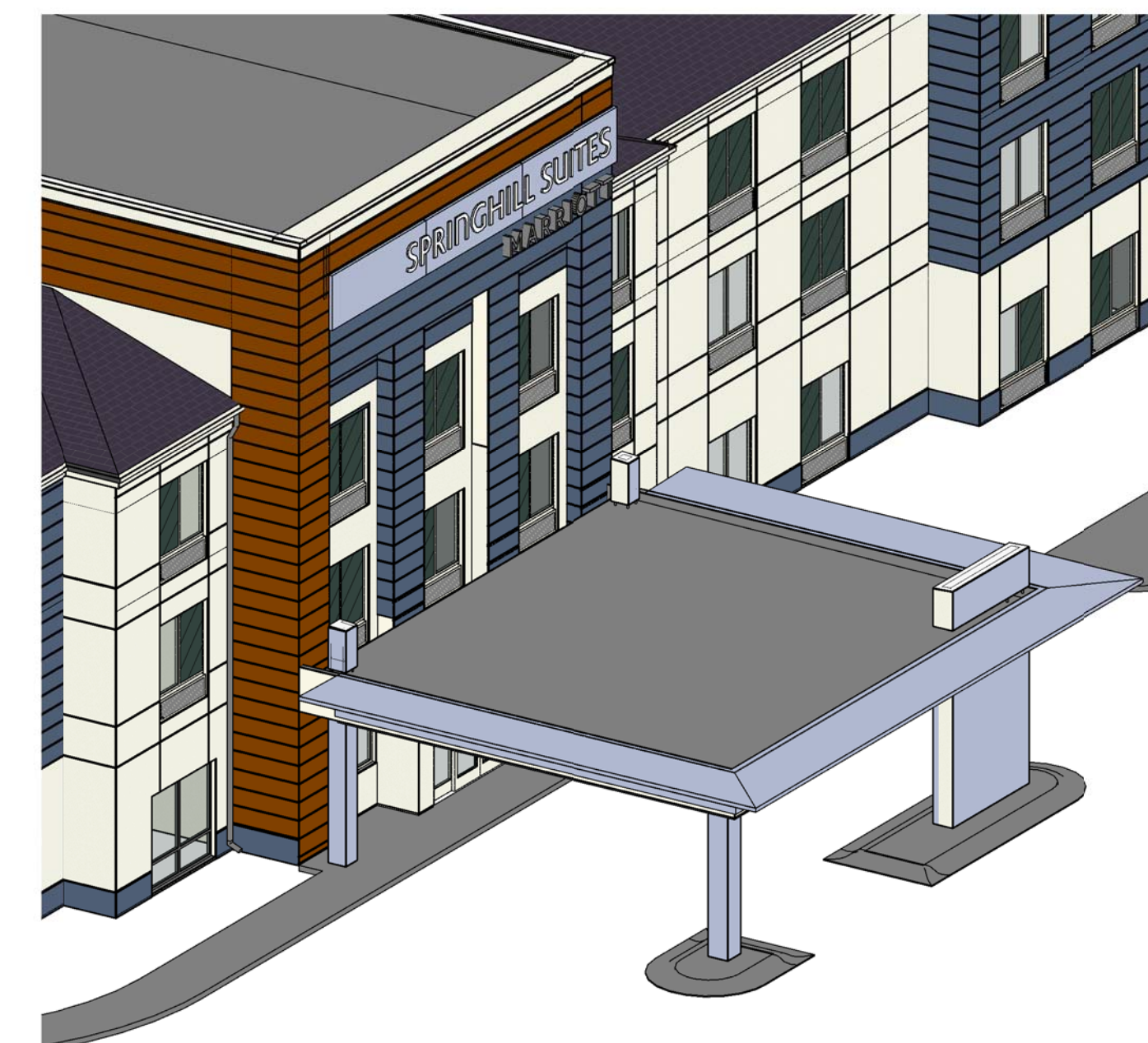




1 Color Perspective



2 Port Cochere Fascia Section - Blade Thin  
3/4" = 1'-0"



3 Axon - Blade Thin

GENERAL SHEET NOTES:

KEY NOTES:

GRAPHICAL KEY

**FRCH**  
DESIGN WORLDWIDE

311 Elm Street | Suite 600 | Cincinnati, OH 45202  
Telephone: 513.241.3900 | Facsimile: 513.241.5915

Contact Information

Owner Washington Prime Group p: (614) 621-9900  
180 East Broad Street  
Columbus, OH 43215

General Contractor p: (405) 755-7624  
Smith & Pickett  
12415 North Santa Fe Avenue  
Oklahoma City, Oklahoma 73114

Architect p: (513) 241-3000  
FRCH Design Worldwide - Cincinnati, Inc.  
311 Elm Street, Suite 600  
Cincinnati, Ohio 45202  
F: (513) 241-5915

Civil Engineer p: (405) 235-8075  
Johnson & Associates, Inc.  
1 East Sheridan Avenue, Suite 200  
Oklahoma City, Oklahoma 73104  
F: (405) 235-8078

Structural Engineer p: (405) 236-5858  
Wallace Engineering  
Structural Consultants, Inc.  
120 East Sheridan Avenue, Suite 104  
Oklahoma City, OK 73104

Reg. Mech./Elec. Engr. p: (330) 659-6688  
Thomson Baker & Associates, Inc.  
3030 West Stevesboro Road  
Richfield, Ohio 44286  
F: (330) 659-6675

Sheet Issue Information

Issued	03/10/17	
Revised	#	Description

Professional Stamp

Project Information

Title **Springhill Suites Exterior Updates**  
Address **Classen Curve**  
**Northwest Grand Boulevard**  
**Oklahoma City, OK 73118**  
Project Number **032841.000**

Sheet Information

Title **Unnamed**  
Drawn **Author**  
Reviewed **Checker**  
Scale **As Noted**  
Authorized For **INTERNAL USE ONLY**

**C2**